

# TallyGenicom 6000 Series Printer Driver Installation Manual

To install TallyGenicom 6000 Series printer driver for Linux TallyGenicom\_6000\_Series-1.0-1.i386.rpm file is required. The following steps should be followed to install the driver.(NB. Only root can install from a rpm installer)

1. Open a shell. A prompt similar to the one shown below appears

```
[root@machine root]#
```

2. cd to the directory where the rpm file is present(eg: /home/user/)

```
[root@machine user]#
```

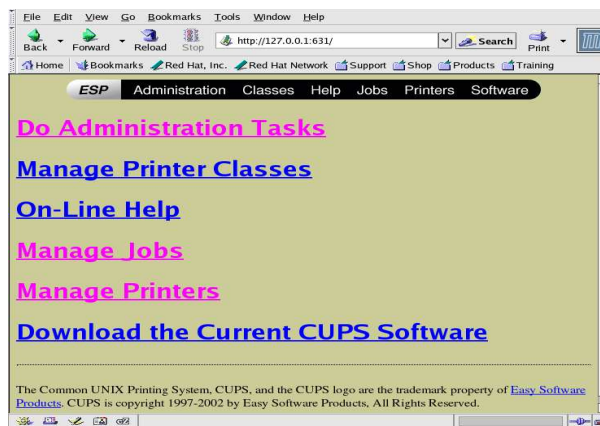
3. Now install the driver with the following command-line

```
[root@machine user]# rpm -ivh --force TallyGenicom_6000_Series-1.0-1.i386.rpm
```

4. If installation is successful the following messages are displayed and a webbrowser window pops up with the CUPS administrative page. If the browser fails to open automatically, open your favorite browser and type <http://127.0.0.1:631> in the address-bar and press enter.

```
[root@machine user]# rpm -ivh --force TallyGenicom_6000_Series-1.0-1.i386.rpm
Preparing...                               ##### [100%]
 1:TallyGenicom_6000_Series                 ##### [100%]
Found fontmap ... in /usr/share/ghostscript/7.05/lib/Fontmap.GS
Finding font installation directory.
This may take some time
  /usr/share/fonts/default/Type1
path (/usr/share/fonts/default/Type1 ) matches with gs look up list
.....
TallyGenicom_6000_Series driver installed. Now add printer form web interface:
Stopping cups: [ OK ]
Starting cups: [ OK ]
```

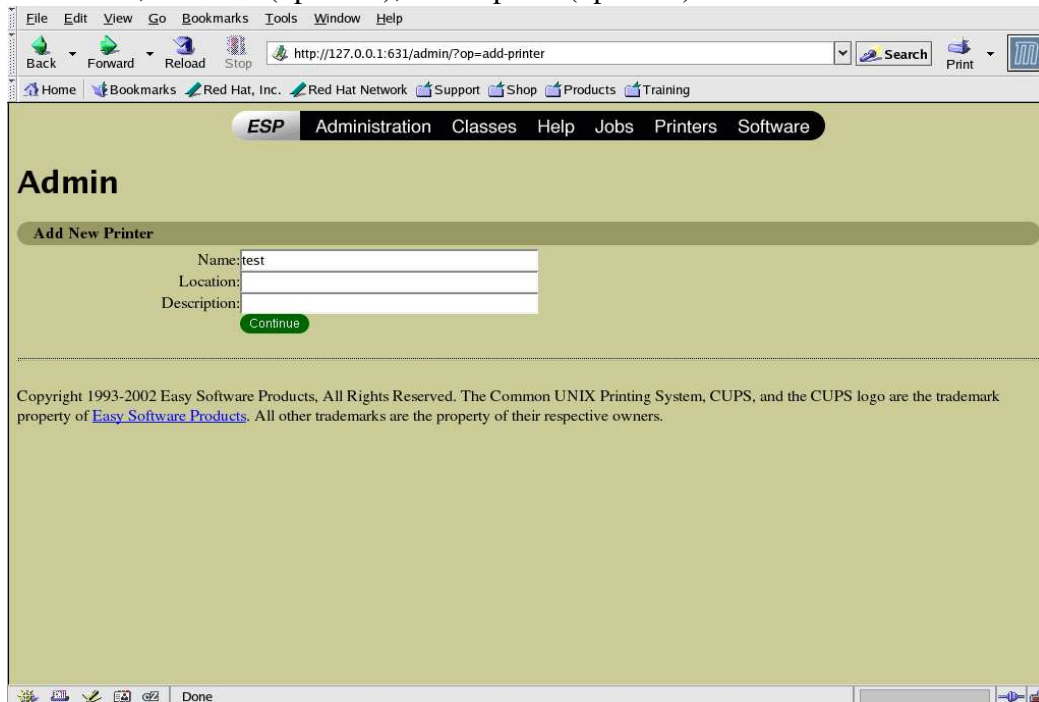
5. In the browser window shown below, click "manage printers" to add a new printer.



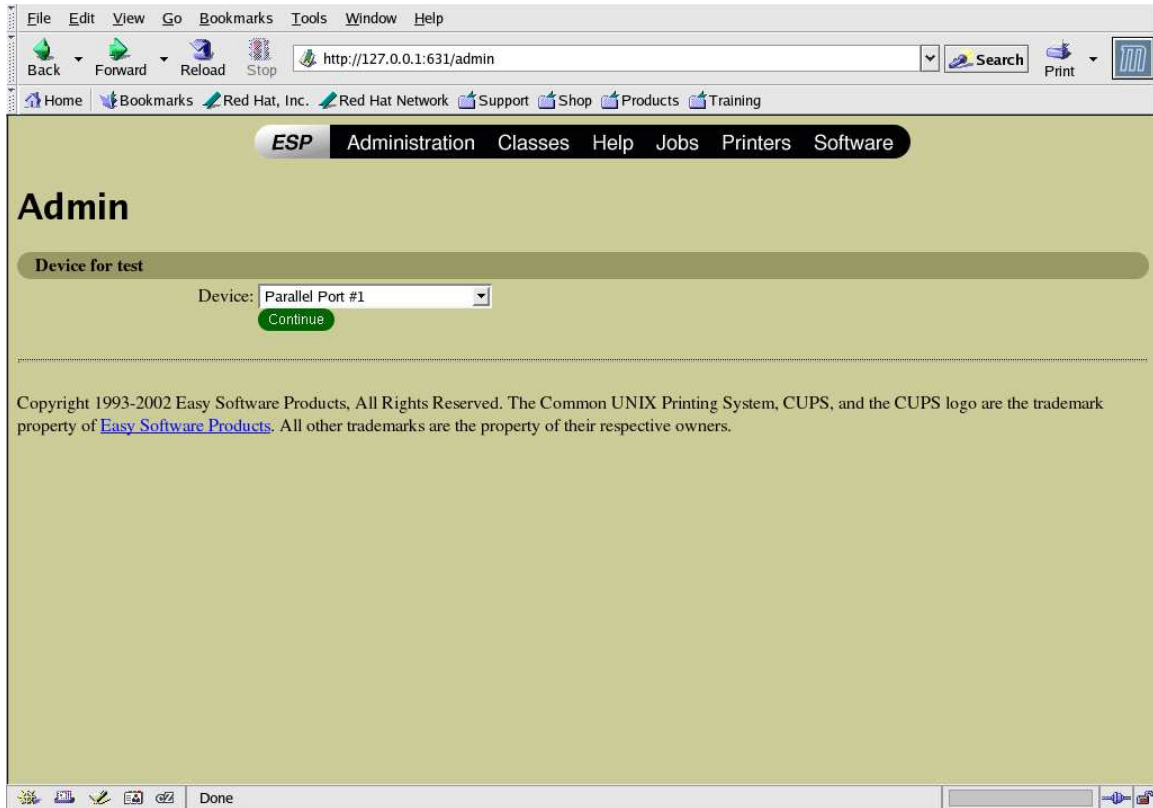
6. The webbrowser now displays the list of printers already added.  
click on the "Add Printer" button.



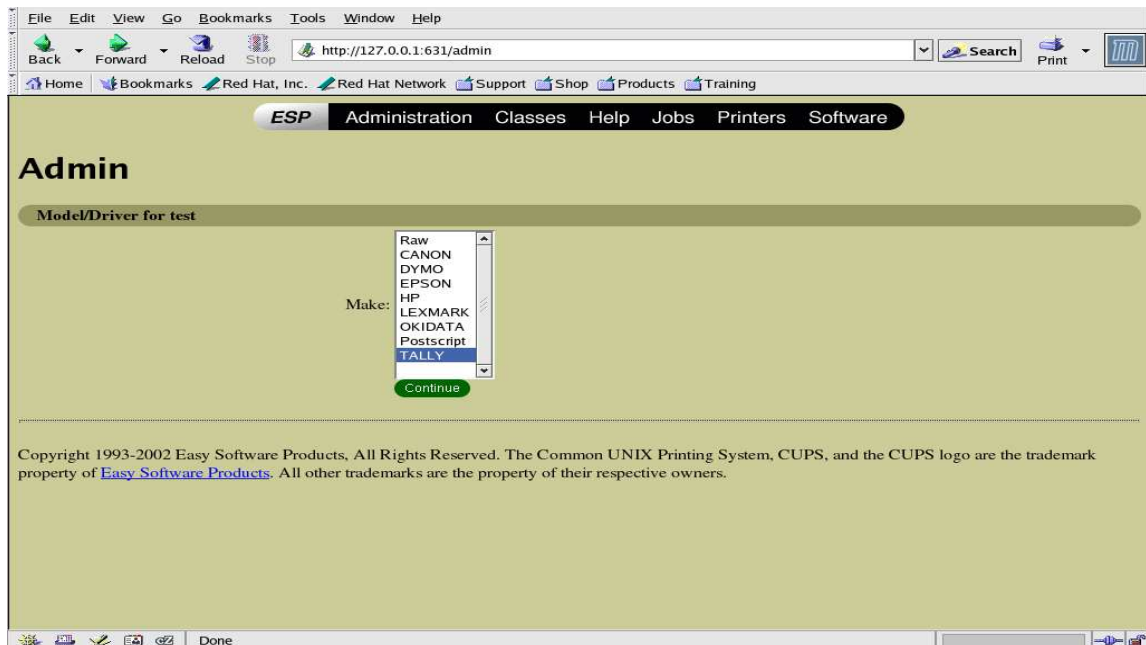
7. Enter Name, Location(optional), Description (optional) and click continue.



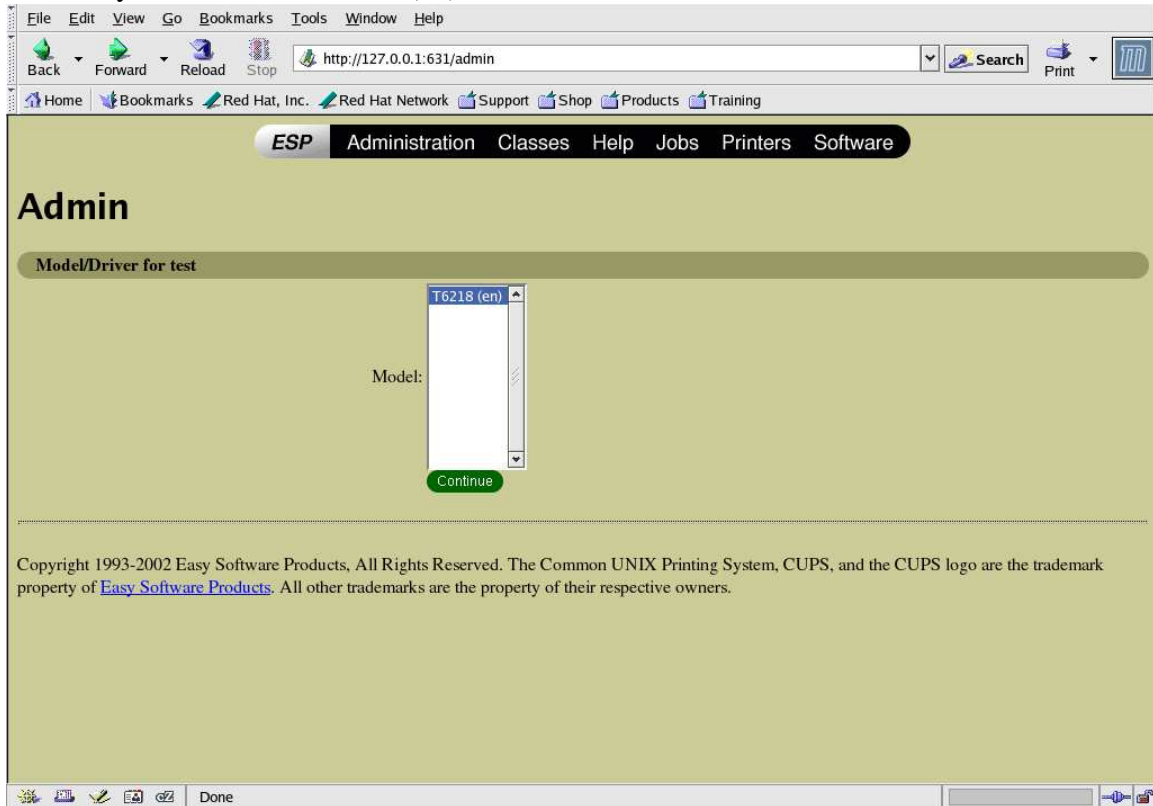
8. The browser displays the list of devices in a combo.  
Select "Parallel Port #1" from the list and click continue.



9. The browser now displays a list of printer manufacturers. Select "TallyGenicom" from the list and click continue.



The browser now displays a list of printer models. Select driver model "TallyGenicom 6000 Series(en)" from the list and click continue.



11. The browser now displays the following message if the printer has been successfully installed.

